

LARIMER COUNTY LAND STEWARDSHIP ADVISORY BOARD

The mission of Larimer County Department of Natural Resources is to establish, protect and manage significant regional parks and open lands providing quality outdoor recreational opportunities and stewardship of natural resource values. We are committed to fostering a sense of community and appreciation for the natural and agricultural heritage of Larimer County for present and future generations.

Date: 11/21/2019

Time: 5:00 – 6:30 p.m.

Location: Larimer County Courthouse, 200 W. Oak St., Fort Collins, CO, 2nd Floor, Lake Loveland Room.

Contact: Please contact Sidney at smichl@larimer.org or 970-619-4462 if you are unable to attend.

AGENDA

Scheduled times are subject to change.

1. CALL TO ORDER/INTRODUCTIONS
2. PUBLIC COMMENT
3. AGENDA REVIEW
4. REVIEW AND APPROVAL OF LAST MEETING MINUTES
5. INFORMATION & ANNOUNCEMENTS
 - a. Natural Resource events for this month: See <http://www.larimer.org/naturalresources>.
6. DISCUSSION ITEMS
 - a. Emerald Ash Borer (EAB) confirmed in Larimer County. Mitigation activities conducted to date and response plan.
 - b. Proposed Rule Changes to the Noxious Weed Act
 - c. Overview of Natural Resources Department Agricultural Lands Strategy
 - d. Overview of Natural Resources Department Restoration Strategy
 - e. Larimer County Oil and Gas Regulations update

7. ACTION ITEMS

- a. Board Election of Officers

8. OTHER BUSINESS

9. NEXT MEETING SCHEDULED: 2/20/2020 at Larimer County Courthouse, 200 W. Oak St., Fort Collins, CO, 2nd Floor, Lake Loveland Room.

10. EXECUTIVE SESSION: Pursuant to C.R.S. (24-6-402(4)(a)) for discussion pertaining to the purchase, acquisition, lease, transfer or sale of any real, personal or other property interest.

11. ADJOURN

Included in PDF:

- Agenda
- EAB update
- Proposed changes to CO Noxious Weed Act
- 2020 Weed Act Rule Concept
- Agricultural Lands Strategy presentation
- Oil and Gas Regulations presentation

Attached Separately:

- Minutes of last meeting

This meeting will be recorded and archived according to law. Votes require a quorum.

Public can view agenda and minutes at:

<http://legacy.larimer.org/boards/minutes/lsubminutes.htm>



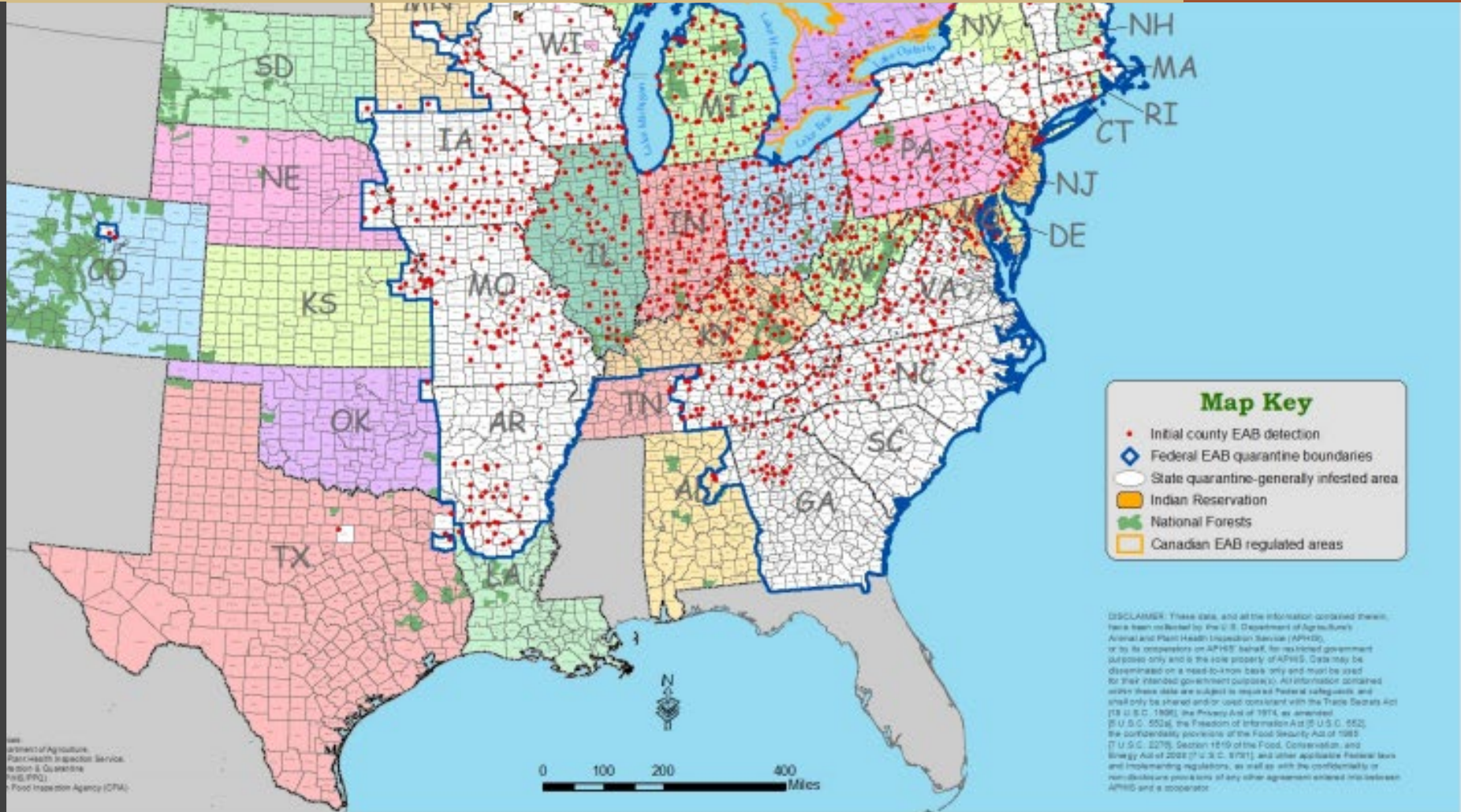
LARIMER COUNTY: NATURAL RESOURCES



EMERALD ASH BORER UPDATE



SLIDE TITLE/PRESENTATION TITLE



EMERALD ASH BORER (EAB)



UGA1241011

EMERALD ASH BORER (EAB)



EAB EXIT HOLE

Jared Spokowsky, Indiana Department
of Natural Resources, Bugwood.org







Ash trees pre-EAB. Belvedere Dr, Toledo. June 2006



Untreated ash after EAB, same location. June 2009



All dead ash street trees removed, same location.

COUNTY EAB MITIGATION

- Parks and Open Spaces
 - 2017: Removed 73 ash trees
 - Planted 43 trees at Horsetooth Reservoir
 - 10-15 trees remain
- County Road ROW
 - Removed all 305 ash trees
- Inventoried ash trees at all county facilities
 - The Ranch – 133 ash trees
 - Other County Facilities – 102 ash trees
 - Efforts underway to remove/replace/treat

CURRENT EAB STRATEGY

EAB Confirmed in Larimer County September 2019

- Continue to monitor spread of EAB and coordinate with other agency partners.
- Continue to provide technical assistance to County Departments.
- Conduct site assessments and provide recommendations for citizens in unincorporated areas.
- Conduct public outreach efforts with partners.



Casey Cisneros <cisnerct@co.larimer.co.us>

Proposed changes to the Noxious Weed Act administrative rule

Casey Cisneros <cisnerct@co.larimer.co.us>
To: Casey Cisneros <cisnerct@larimer.org>

Mon, Sep 23, 2019 at 12:30 PM

From: **Ryder - CDA, Steve** <steve.ryder@state.co.us>
Date: Fri, Sep 6, 2019 at 2:47 PM
Subject: Proposed changes to the Noxious Weed Act administrative rule

County weed managers & representatives,

CDA is proposing to amend the rules that administer the Colorado Noxious Weed Act. Attached is the "rule concept" which summarizes CDA's proposal. We circulate the rule concept as widely as possible, and will solicit and compile any comments or other correspondence or communication from now until the administrative hearing is completed. Once revisions, if any, are made, the final rule becomes effective at the end of March 2020.

Comments submitted before the notice of administrative rule hearing in early December are considered informal, while comments submitted between the notice and the hearing (approximately one month) are considered formal. Both will be considered equally. Please feel free to distribute this email to any interested party. Also, please have any comments directed to [me](#) or to [Lara Duran](#) so that we can compile and respond as necessary.

We will keep you informed of specific dates once we have them, and welcome any questions or comments you may have. Comments should be specific to the proposed changes being made, although all comments will be reviewed and considered.

Apologies for duplicate emails (especially those of you on a few lists)!

Thanks & have a pleasant weekend!

Steve

Steve Ryder
State Weed Coordinator



COLORADO
Department of Agriculture
Conservation Services Division

P 303.869.9034 | C 303.828.8329
305 Interlocken Parkway, Broomfield, CO 80021
steve.ryder@state.co.us | www.colorado.gov/ag/weeds

Weed Act Rule concept_2020_v 8-23-19.docx
16K

2020 Weed Act Rule – Concept

8/23/19

The Colorado Department of Agriculture proposes to amend the existing rule (8 CCR 1206-2 Rules Pertaining to the Administration and Enforcement of the Colorado Noxious Weed Act).

CDA proposes to amend the Rules to remove “Part 6 Watch List Species.” This list will continue to be maintained by program staff as was done prior to its being moved into the Rules. Rather than waiting every two years for updating, CDA believes that having additional flexibility and timeliness will keep the list more relevant and make it a more effective awareness tool.

Updates to management plans for a subset of List B species are proposed to be added to the Rule. These include absinth wormwood (*Artemisia absinthium*), black henbane (*Hyoscyamus niger*), Canada thistle (*Cirsium arvense*), Chinese clematis (*Clematis orientalis*), diffuse knapweed (*Centaurea diffusa*), hoary cress (*Cardaria draba*), houndstongue (*Cynoglossum officinale*), leafy spurge (*Euphorbia esula*), oxeye daisy (*Leucanthemum vulgare*), plumeless thistle (*Carduus acanthoides*), Russian-olive (*Elaeagnus angustifolia*), salt cedar (*Tamarix chinensis*, *T. parviflora*, and *T. ramosissima*), spotted knapweed (*Centaurea stoebe* L. ssp. *micranthos*), diffuse knapweed (*Centaurea diffusa*), spotted x diffuse knapweed hybrid (*Centaurea x psammogena* = *C. stoebe* x *C. diffusa* ssp. *micranthos*), and yellow nutsedge (*Cyperus esculentus*). State noxious weed management plans need to be updated on a regular basis in order to revise expired dates; to take into account control efforts made in recent years, and reflect changes in abundance and/or distribution. These plans are necessary in order to coordinate appropriate actions at the private, local, state, and federal levels that will halt the continued spread of these species.

The amendment would revise species scientific names for the following List A noxious weeds: Bohemian knotweed (*Polygonum x bohemicum*) change to *Fallopia x bohemicum*; giant knotweed (*Polygonum sachalinense*) change to *Fallopia sachalinensis*; Japanese knotweed (*Polygonum cuspidatum*) change to *Fallopia japonica*; and meadow knapweed (*Centaurea nigrescens*) change to *Centaurea x moncktonii*; and for List B noxious weed hoary cress (*Cardaria draba*) which would change to *Rhaponticum repens*, spotted knapweed (*Centaurea stoebe*) which would change to *Centaurea stoebe* L. ssp. *micranthos*, and spotted x diffuse knapweed hybrid (*Centaurea x psammogena*= *C. stoebe* x *C. diffusa* ssp. *micranthos*) which would change to *Centaurea X psammogena*. These changes are necessary to be consistent with North American-wide interagency efforts to use taxonomy that is scientifically accepted by Integrated Taxonomic Information System.

Finally, the amendment revises List B management plan expiration dates to reflect a biennial update cycle; may revise the organization and language of parts of the rule to improve its clarity without affecting the substance of the rule; and corrects any typographical errors.

AGRICULTURAL LANDS STRATEGY



Background

Current Portfolio

- 63% of conserved lands in agriculture (31,000 acres)
- Conservation easements and fee-simple

Goal: Develop an agricultural lands strategy

- Conservation outcomes: Acquisitions & Management



Conservation Outcomes - Acquisitions

Croplands vs. Rangelands

Sustainability: Contiguity & Ownership

Water Rights





Conservation Outcomes: Soil & Water



Conservation Outcomes: Soil & Water



DRYLAND FARMER

see all these earthworm and old root channels."

"We had a lot of near 100 degree days with no measurable rain here in almost three weeks and this soil is completely wet and cool."

CORN
It's planted directly in crop residue, which provides nutrients while keeping soil exposure to a minimum.

WATER INFILTRATION
Crop residues buffer against the impact of raindrops and increase the total amount of water stored within a plant's root zone.

TOP SOIL
It's protected under a blanket of crop residue, which is important because it can take hundreds of years to create a single inch of top soil.

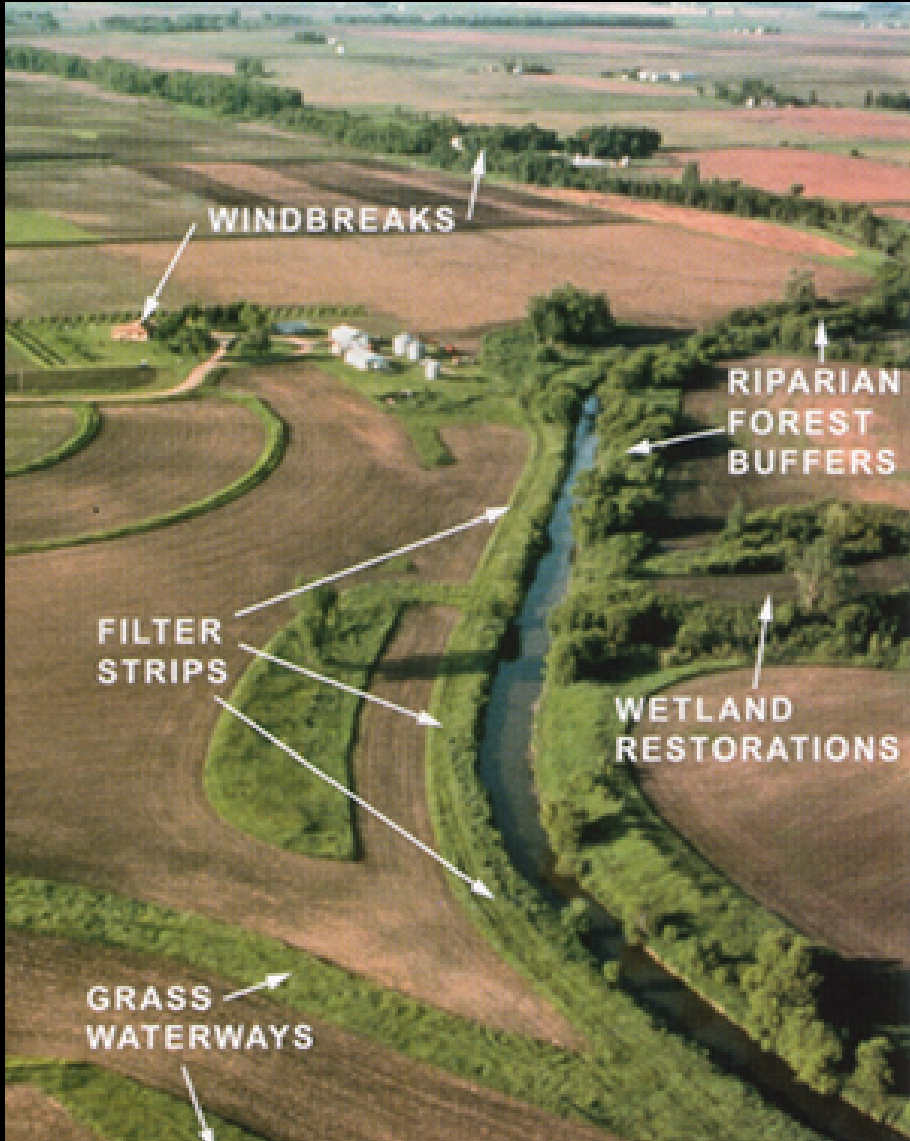
CROP RESIDUE
It's left on the ground to protect the soil from the erosive forces of wind and rain, and to shade it from the sun.

NO-TILL

Growing crops without disturbing the soil through tillage



Conservation Outcomes: Habitat



Process

Nov: Share concept with Department Boards
Staff team develop draft plan

Jan/Feb: Review Draft Plan
Stakeholders (ie: NRCS staff, AAB, ESAB)
Department Boards
County Commissioners



LARIMER COUNTY NATURAL RESOURCES DEPARTMENT



Applicability and Goal

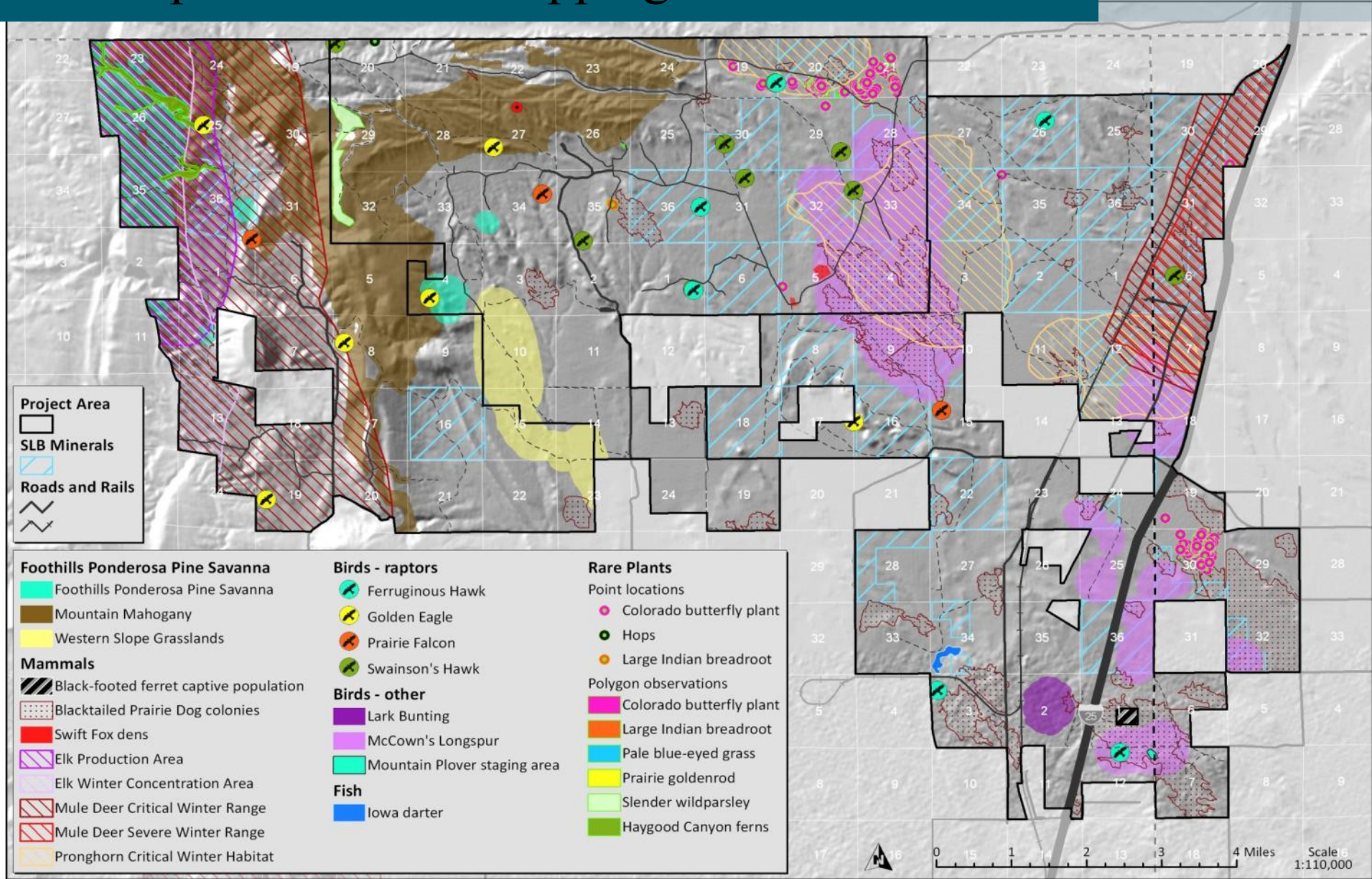
- Goal: To develop a plan for oil and gas development that **provides access** to the mineral estate, with specific strategies to **avoid, minimize and mitigate** surface impacts to key resource values.
- Base premise: lands conserved in fee be granted a no surface occupancy status unless no other viable alternative exists.
- Energy By Design: If surface use is the only viable alternative, the applicant will work with the owner (county or city) to perform a resource assessment planning process.

Process

1. Identify & Map Priority Resource Values
 - Biological
 - Cultural
 - Recreational (viewsheds & facilities)
2. Add Buffers & Timing Limitations
3. Overlay Maps
4. Define Surface Occupancy

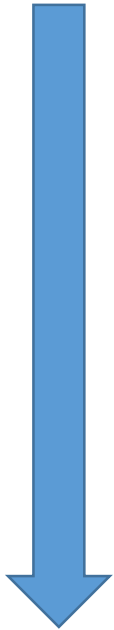


Example: Resource Mapping



Surface Occupancy Definitions

Highest Values/
Most Restrictive



1. No surface occupancy (NSO)

Highest resource value areas. Complete avoidance.

2. Restricted surface occupancy (RSO)

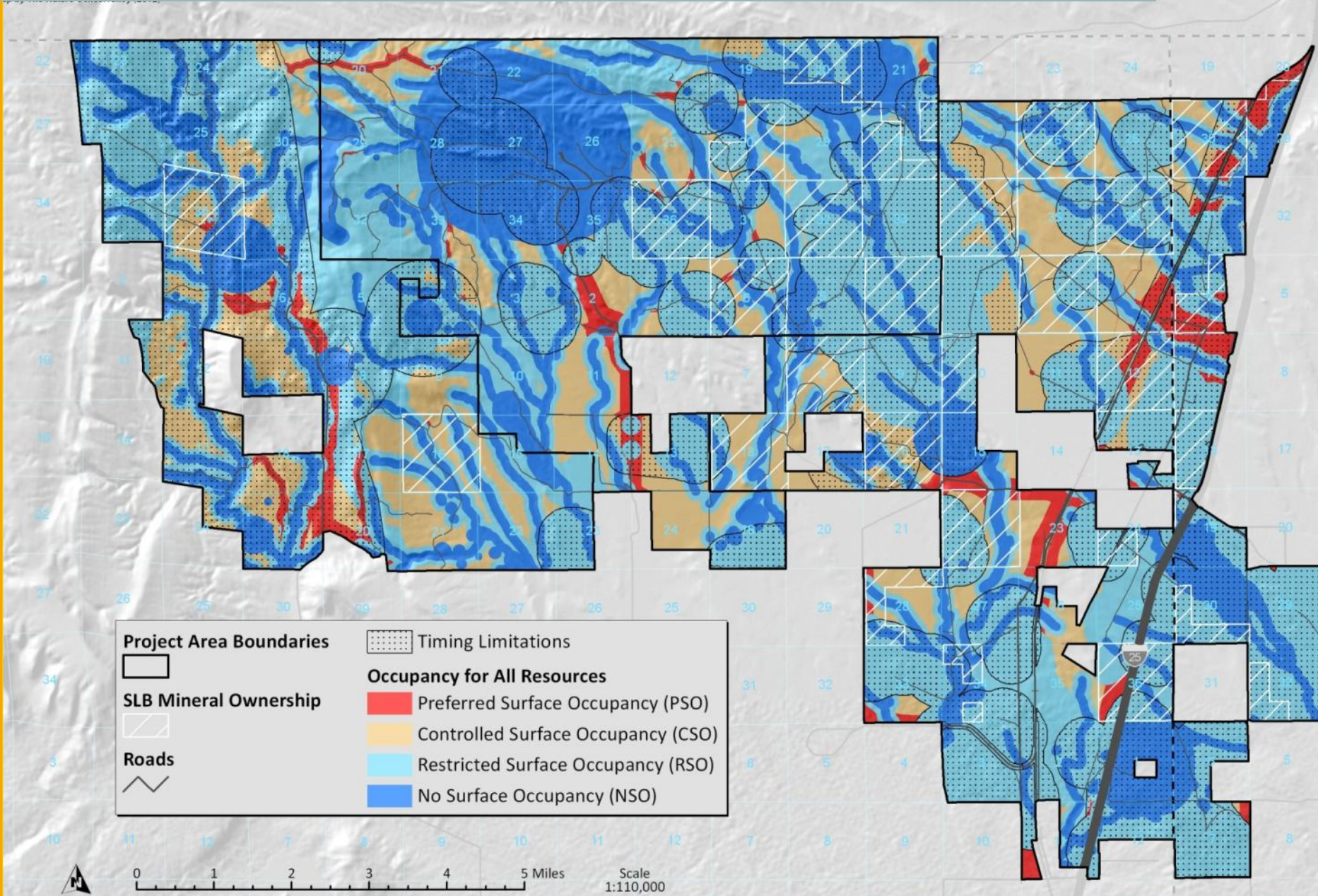
Limited oil and gas development permitted with strategies to minimize/eliminate any permanent impact. BMP's apply.

3. Preferred surface occupancy (PSO)

Areas of previous/existing disturbance

Lowest Values/
Least Restrictive

Surface Occupancy Map



Project Area Boundaries 	Timing Limitations
SLB Mineral Ownership 	Occupancy for All Resources
Roads 	Preferred Surface Occupancy (PSO)
	Controlled Surface Occupancy (CSO)
	Restricted Surface Occupancy (RSO)
	No Surface Occupancy (NSO)

0 1 2 3 4 5 Miles
Scale 1:110,000

Best Management Practices

General

- Spacing
- Weed control
- Dust control
- Disturbance Caps
- Reclamation
- Compensatory mitigation
- Others

Conservation Target-specific

- Seasonal Timing Limitations
- Daily Timing Limitations
- Survey requirements